

LABORTOPS

valid until 30th of September 2018

LLG-Disposable Gloves *classic*, Latex



Page 3

Natural Latex

High Wearing Comfort + Perfect Fit

Occupational Safety	2	Tubing	14
Cleanroom	4	Liquid Handling	15
Moisture Analysis/Weighing	5	Cell Culture	17
Sampling	6	Microbiology	18
General Laboratory Consumables	7	Optics	19
Filtration	8	Environmental Measurements	20
General Laboratory Consumables	9	pH Measurement	21
Centrifugation	10	Temperature and Humidity Measurement	22
Glassware	12	Vacuum Measurement	23
Dispensing	13	Thermo shaker	24

LLG-Disposable Protective Clothing



① Bouffant Caps, PP

PP nonwoven 10 g/m², universal fit Ø 52 cm, with all-around elastic, latex-free

-30%

Colour	PK	Cat. No.	Price	Now
			EUR	EUR
green	100	6.282 788	8,50	5,95
white	100	6.282 789	8,50	5,95
blue	100	6.282 790	8,50	5,95



② Protective Sleeves, PE



PE film with elastic, latex-free, length 40 cm

-30%

Colour	Thickness	PK	Cat. No.	Price	Now
	µm			EUR	EUR
blue	20	100	6.282 797	6,45	4,52
white	20	100	6.282 798	6,45	4,52
blue	40	100	6.282 799	11,70	8,19

③ Shoe Covers, CPE



Blue embossed CPE film, 30 µm, with elastic, latex-free, universal size, length 41 cm.

-30%

Type	PK	Cat. No.	Price	Now
			EUR	EUR
LLG-Disposable Overshoes, CPE	100	6.282 795	7,20	5,04

④ Shoe Covers, PP, with CPE sole



White PP non-woven, 38 g/m² with blue, non-slip sole CPE, 38 µm, with elastic, latex-free, universal size, length 40 cm.

-30%

Type	PK	Cat. No.	Price	Now
			EUR	EUR
LLG-Disposable Overshoes, CPE sole	50	6.282 794	11,70	8,19

⑤



⑥



⑤ Protective Suits, PP

White PP non-woven 30 g/m², with hood and zipper, elastic band on the hood and on the wrists and ankles, latex-free.

-30%

Size	PK	Cat. No.	Price	Now
			EUR	EUR
L	10	6.282 791	12,50	12,25
XL	10	6.282 792	12,80	12,46
XXL	10	6.282 793	13,30	12,81

⑥ Visitor Gowns, PP

White PP nonwoven 30 g/m², universal size with shirt collar and elastic at the wrists, latex-free, without pocket, 4 push buttons.

-30%

Description	PK	Cat. No.	Price	Now
			EUR	EUR
LLG-Visitors gown, PP non-woven	50	6.282 796	46,80	32,76

LLG-Disposable Gloves *classic*, Latex, Powder-Free

EN 374 EN 374 EN 420



The ideal glove for all applications which require a high tactile sensitivity.

- Skin-friendly
- Excellent tactile sensitivity
- High durability due to special formulation
- **Cat. III Low Chemical resistant.** AQL 1.5.
- Thiuram free, reduced risk of contact eczemas

According to ASTM 1671 (ISO 16604) for protection against viral penetration.

According to EN 420. Suitable for food handling.

Glove shape:	flat with rolled edge, ambidextrous
Material:	natural latex
Colour:	natural white
Outside:	textured fingers
Inside:	powder free
Size/Length:	S, M, L, XL/med. 240 mm
Thickness (measured in double layer):	0.20 mm

-30%

Size	PK	Cat. No.	Price	Now
			EUR	EUR
S	100	9.006 383	11,50	8,05
M	100	9.006 384	11,50	8,05
L	100	9.006 385	11,50	8,05
XL	90	9.006 386	11,50	8,05

Premium Respirators 8825+ and 8835+, Moulded Masks



Respirators Premium 8825+ and 8835+ moulded masks offer the new patented 3-dimensional face seal with integrated nose profile of 3M Premium+ Series. This offers the convenience of a disposable mask, as well as the concept of tailor-made face seal of reusable respirator masks. The profile of the respirator directs the air escaping through the filter medium away from the face. The upward air flow is minimized as much possible reducing fogging of safety glasses.

Authorization: EU construction test (CE mark)
Testing standards: EN 149:2001



Flexible and 3-Dimensional for Better Individual Fit and Secure Fit Closure!

-15%

Type	Protection-level	Usage restrictions	PK	Cat. No.	Price	Now
					EUR	EUR
8825+	FFP2 RD	12 x TLV	5	6.284 248	33,50	28,48
8835+	FFP3 RD	50 x TLV	5	6.284 249	40,65	34,55

Disposable Gloves KIMTECH SCIENCE*PURPLE NITRILE XTRA*, Nitrile, Powder-Free

EN 374 EN 374 EN 420



Exceptional Workplaces®



PPE Category III certified under CE directive 89/686/EEC for Personal Protective Equipment.

Ideal for use in higher-risk applications within life sciences, biomedical research, forensic science and non-sterile drug manufacturing. Providing the highest level of protection in the KIMTECH*glove range. Protecting against chemical splash and micro-organism hazards. Protecting against the risk of contamination. EN374-1:2003 Chemical Splash protection. EN374-3:2003 Chemical permeation testing on over 50 chemicals. ASTM 6978-05 permeation testing on over 20 cytotoxic drugs. AQL 0.65/EN374-2 Level 3 Micro-Organism protection. ISO16604 virus resistant. Food contact approved.

Available as: powder-free, ambidextrous gloves, 30 cm long and textured fingertips for a very good grip.

-15%

Size	PK	Cat. No.	Price	Now
			EUR	EUR
XS (5 - 6)	50	6.280 034	19,97	16,97
S (6 - 7)	50	6.280 035	19,97	16,97
M (7 - 8)	50	6.280 036	19,97	16,97
L (8 - 9)	50	6.280 037	19,97	16,97
XL (9 - 10)	50	6.280 038	19,97	16,97

Hand Protectors Hot Hand®, silicone



Safe, non-slip protection against very hot or cold surfaces. Measures 10 cm x 19 cm with durable silicone rubber construction that remains flexible from -57 °C to +260 °C. End pockets accept thumb and fingers to grasp objects. Mitts have multiple studs with concave tips thus providing secure grip on virtually all hot/cold surfaces.

-15%

Type	PK	Cat. No.	Price	Now
			EUR	EUR
Hot Hand®	1	9.119 900	32,48	27,61

Cleanroom Gloves, KIMTECH PURE*G3 nitrile, powder-free

EN 374 EN 374



Exceptional Workplaces



Advanced Levels of Process Protection and Wearing Comfort in ISO 3 or higher Cleanrooms!

Clean processed, with lot testing and trending for low particle and extractable levels. PPE Category III certified under CE directive 89/686/EEC for personal protective equipment.

Ideal for the handling of delicate equipment in microelectronics, semiconductor, optics and pharmaceutical industries. Maximum particle limit 950 per cm².

IEST-RP-CC005 EN374-1:2003 - Chemical Splash protection.

EN374-3:2003 - Chemical permeation testing.

AQL 1.5/EN374-2 - Level 2 Micro-Organism protection.

ISO16604 - virus resistant.

30 cm long ambidextrous gloves with beaded cuff for added strength and textured fingertips for an improved grip. Silicone free formulation and double lined bags for added protection.

-15%

Size	Length	PK	Cat. No.	Price	Now
	cm			EUR	EUR
XS	30	1000	6.264 543	344,17	292,54
S	30	1000	7.625 756	344,17	292,54
M	30	1000	7.625 757	344,17	292,54
L	30	1000	6.242 757	344,17	292,54

Cleanroom Paper



Cleanroom paper available in white and blue.
 - Suitable for Cleanroom class ISO 5
 - Surface resistance: <10¹¹Ω
 - 72 g/m²
 - Packed in Cleanroom

-15%

Size	Colour	PK	Cat. No.	Price	Now
				EUR	EUR
A4	blue	2500	4.659 102	119,00	101,15
A4	white	2500	4.659 103	119,00	101,15
A3	white	1250	4.659 104	119,00	101,15

Finger Cots "High Grip", natural rubber



The finger cots made of antistatic natural rubber, with a thickness of min. 0.09 mm, are ideal for applications where the highest precision and fingertip sensation is required. Due to microtexturing, they are also especially handy.

Surface resistance: 10⁹~120Ω

-15%

Size	Material	PK	Cat. No.	Price	Now
				EUR	EUR
S	natural rubber, rolled edge	1440	4.659 035	20,90	17,77
M	natural rubber, rolled edge	1440	4.659 036	20,90	17,77
L	natural rubber, rolled edge	1440	4.659 037	20,90	17,77
S	natural rubber, cut edge	1440	4.659 038	20,90	17,77
M	natural rubber, cut edge	1440	4.659 039	20,90	17,77

Cleanroom Wipes Sontara® MicroPure, polyester/cellulose



Sontara® MicroPure nonwoven styles (woodpulp/polyester) are engineered for cleanroom use and combine absorbency of a natural fibre with the cleanliness and strength of a synthetic fibre in the same fabric. No binders or chemical treatments are used to manufacture them. The high cleanliness and purity are ensured by low extractable level and ion content, as well as extremely low particle generation by the material itself. The fabric styles offer high particle and liquid absorbency due to their cellulose content.

-5%

Type	Dimensions	Cleanroom Class	PK	Cat. No.	Price	Now
	mm				EUR	EUR
Sontara® MicroPure 100	305 x 305	ISO 5 + 6	150	9.390 185	17,75	16,86
Sontara® MicroPure 100	224 x 224	ISO 5 + 6	300	9.390 186	17,63	16,75
Sontara® MicroPure AP	305 x 305	ISO 6 - 9	150	9.390 187	18,38	17,46
Sontara® MicroPure AP	224 x 224	ISO 6 - 9	300	9.390 188	15,63	14,85
Sontara® MicroPure SV	305 x 305	ISO 7 - 9	250	9.390 189	18,88	17,94
Sontara® MicroPure SV	224 x 224	ISO 7 - 9	500	9.390 190	23,18	22,02

Halogen Moisture Analyser DBS 60-3



Modern moisture analyser with 10 memories and graphic display

- Halogen quartz glass heater 400 W
- Backlit LCD display, digit height 15 mm: Previous drying time, current temperature, unit for displaying the results, current moisture content in %, drying mode/Status display drying
- Observation window over the sample, useful during initial adjustment
- Internal memory for automatic sequence of 10 drying programs and 100 drying processes carried out
- The last value measured remains on the display until it is replaced by a new measurement
- Sample description for up to 99 samples, 2 digits, freely programmable, and is printed in the measuring protocol
- Date and time display as standard
- 10 sample plates included
- Table of applications: practical examples in the operating instructions



Specifications

Readability:	0.01 %/0.001 g
Weighing range, max:	60 g
Reproducibility, weight of sample 2 g:	0.15 %
Reproducibility, weight of sample 10 g:	0.02 %
Temperature range:	+50 to +200 °C
Dimensions (W x D x H):	202 x 336 x 157 mm

-15%

Type	PK	Cat. No.	Price	Now
			EUR	EUR
DBS 60-3	1	9.901 441	1.270,00	1.079,50

LLG-Sample dishes, Aluminium



High quality aluminium sample dishes, for moisture determination.



-15%

Description	Diam.	Height	PK	Cat. No.	Price	Now
	mm	mm			EUR	EUR
Sample dishes	90	7	80	6.282 670	32,00	27,20

Weighing Paper MN 226



Transparent, smooth. Block of 100 sheets.



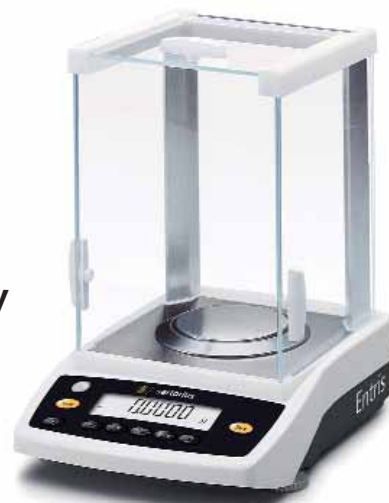
-15%

Type	Width	Length	PK	Cat. No.	Price	Now
	mm	mm			EUR	EUR
MN 226	90	115	100	9.058 975	10,10	8,59

Analytical Balance Entris®



- Good Readability
- Reliability
- High Accuracy



The new Entris® was specially designed for effective and reliable every day weighing.

- Excellent readability by the backlit and high-contrast display, navigation with the function keys and the easy-to-read water level on the front allows for easy and fast operation
- For cleaning of the windshield, the side windows, the sliding cover and all stainless steel parts are easily removable
- The monolithic weighing system guarantees a permanently high measurement accuracy and represents the reliability and quality of a Sartorius balance
- Internal calibration
- Dimensions (W x D x H): 230 x 303 x 330 mm, Height weighing space: 240 mm, Plate diam.: 90 mm
- Readability/Reproducibility: 0.1 mg, Linearity: ±0.2 mg

Supplied with: Universal power adapter, installations and operation manual, windshield as indicated

-10%

Type	Weighing range g	Calibration	PK	Cat. No.	Price	Now
					EUR	EUR
ENTRIS64i-1S	60	internal	1	6.262 574	1.780,00	1.602,00
ENTRIS64i-1S	60	external	1	6.262 575	1.500,00	1.350,00
ENTRIS124i-1S	120	internal	1	6.262 327	1.910,00	1.719,00
ENTRIS124i-1S	120	external	1	6.262 573	1.630,00	1.467,00
ENTRIS224i-1S	220	internal	1	6.262 468	2.040,00	1.836,00
ENTRIS224i-1S	220	external	1	6.262 572	1.750,00	1.575,00

Weighing Scoops, borosilicate glass 3.3



Ideal for powders or granules which are dispensed via the tubular stem.

-15%

Capacity	PK	Cat. No.	Price	Now
ml			EUR	EUR
3	1	9.301 066	12,12	10,30
6	1	9.301 067	14,43	12,27
10	1	9.301 068	14,55	12,37

Measuring Scoops, PP



VITLAB
Competence in Labware



White measuring scoops which are also suitable as weighing scoops. With precision formed filling edge and comfortable, stable handle.

Easily readable volume quantities on the upper side of the handle.

Food-safe products according to EC Directive No. 10/2011.

**BIG
PACK**

-15%

Capacity	Length	PK	Cat. No.	Price	Now
ml	mm			EUR	EUR
2	60	12	9.201 042	3,72	3,16
10	100	12	9.201 045	5,40	4,59
25	135	12	9.201 047	6,96	5,92
50	160	12	9.201 048	10,08	8,57
100	200	12	9.201 049	15,12	12,85
1000	385	6	9.201 050	28,20	23,97

LLG-Sampling Dippers, PS, sterile, with screw cap and handle

LLG
LABWARE



For Sterile Sample Collection and Dispatch

Blue sample container with PP lid (30 ml) or metal cover with PVC seal (100 ml, 250 ml). Easy to transport after sampling by breaking the handle.

- To minimize the risk of cross contamination
- Individually wrapped and EO sterilised
- Leakproof-tested screw cap
- Handle easily breakable after sampling

-15%

Capacity	Length Handle	Material container	Material Lid	PK	Cat. No.	Price	Now
ml	mm					EUR	EUR
30	200	PS	PP	50	6.265 643	74,80	63,58
100	385	PS	metal	50	6.265 644	92,10	78,29
250	330	PS	metal	50	6.265 645	113,60	96,56

TeleScoop

Telescopic Rods, aluminium

Aluminium, with red plastic fittings. The special construction prevents the bars rotating during retrieval of a sample. With screw clamps and end-stops to prevent the sections sliding apart.

burkle



-15%

Length	PK	Cat. No.	Price	Now
m			EUR	EUR
0,95 - 2,80	1	9.303 801	48,10	40,89
1,25 - 2,50	1	9.303 802	20,80	17,68
1,15 - 3,00	1	9.303 804	48,10	40,89
1,65 - 4,50	1	9.303 806	67,15	57,08
1,75 - 6,00	1	9.303 807	82,40	70,04

Pendulum Beaker, PP

Automatically swings into a vertical position. Nothing can be spilt. Ideal for deep and narrow shafts.



-15%

Capacity	Material	PK	Cat. No.	Price	Now
ml				EUR	EUR
600	PP	1	9.303 820	42,95	36,51
1000	PP	1	9.303 822	45,05	38,29

Angular Sample Beakers, PP

With individual variable angle adjustment.



-15%

Capacity	Material	PK	Cat. No.	Price	Now
ml				EUR	EUR
600	PP	1	9.303 810	46,00	39,10
1000	PP	1	9.303 812	46,95	39,91
2000	PP	1	9.303 814	51,60	43,86

Aluminium Bottles, with UN approval



For storage, transport or shipment of samples/reference materials.

- With UN approval (60 - 5600 ml)
- Pure aluminium (AL99.5 material)
- PP screw cap with internal aluminium seal

**BIG
PACK**

-15%

Capacity	Diam.	Height	PK	Cat. No.	Price	Now
ml	mm	mm			EUR	EUR
60	40	88	10	6.291 403	16,20	13,77
120	57	97	10	6.291 404	19,50	16,58
300	57	160	10	6.291 405	25,90	22,02
600	74	192	10	6.291 406	37,60	31,96
1200	88	248	10	6.291 407	44,50	37,83
3000	161	215	1	6.290 528	15,30	13,01
5600	161	340	1	6.290 529	18,20	15,47

Timer Compact



Laboratory Short Period Timer. Countdown/Countup. Digital reading, with alarm and repeat function. 12 hr. clock function. Countdown and countup display: 23 hrs, 59 mins, 59 secs. Battery SR 44 inclusive.

Dimensions (W x H x D): 64 x 60 x 16 mm
Weight: 40 g

-25%

Type	PK	Cat. No.	Price	Now
			EUR	EUR
Compact	1	9.262 071	26,90	20,18

LLG-Aspirator Bottles, narrow neck, PE-HD, with stopcock



With carrying handle and 3/4" stopcock. Suitable for food. Very strong and durable quality for extended use over time. With gasket in the screw cap for a very tight seal. Screw cap can be attached to the bottle using the integrated loops. The bottles can be used by temperature from -40 °C to +80 °C.

Please use only in upright position.

-30%

Capacity	Neck Int. diam.	Neck Ext. diam.	Body diam.	Height	Handle	PK	Cat. No.	Price	Now
l	mm	mm	mm	mm				EUR	EUR
5	52	62	160	350	1	1	9.139 933	32,50	22,75
10	52	62	210	430	1	1	9.139 934	40,50	28,35
25	84	97	270	570	2	1	9.139 935	86,30	60,41
50	84	97	350	690	2	1	9.139 936	142,20	99,54

LLG-Buckets, PP



White. With lid and temper-evident closure. For transport, packaging and storage of foodstuffs, building materials and non-corrosive chemicals. Stability guaranteed when filling up with material up to 80 °C.

-30%

Capacity	Diam.	Height	PK	Cat. No.	Price	Now
Litres	mm	mm			EUR	EUR
1	131	127	10	6.291 418	9,50	6,65
2	179	133	10	6.291 419	15,00	10,50
3	198	141	10	6.291 420	19,00	13,30
5	224	193	10	6.291 421	24,00	16,80
10	266	265	10	6.291 422	38,00	26,60

Filtering Apparatus DURAN®



- Universally Applicable
- For Coarse, Fine and Analytical Filtration

Made of borosilicate glass. Aside from glass, the medium only comes into chemical contact with PTFE. This means that the filtering apparatus can be used to filter virtually any chemical. Thanks to the PTFE disc holder, fritted glass discs of different porosities can be used in addition to the slit-sieve disc. This creates a wide application scope for filtration using filter paper, membrane filters (47 mm) or simply using glass filters.

- Removable filter discs ensure easy cleaning
- Slit-sieve disc for mounting filter paper/membrane filter
- Funnel with scale
- Secure plastic hose connection
- Tried-and-tested DURAN® filtering flask
- All components are available as spare parts

Scope of delivery: 1000ml suction bottle with NS 45/40, extension NS 45/40 with hose connection GL14, PTFE adapter plate, filter disc D50 (porosity 2), slit-sieve disc D48, filter funnel 250 ml, clamp (Alu), straight plastic hose connection with seal, threaded cap GL14

Description	PK	Cat. No.	Price	Now
Filtering Apparatus DURAN®, 1000 ml / 250 ml	1	9.052 744	EUR 456,56	EUR 388,08

-15%

LLG-Qualitative Filter Paper, circles



Medium fast.
- For fast filtration with fine particles
- Ø 47 mm

-15%

Pore size µm	Filtration time secs.	PK	Cat. No.	Price	Now
5 - 13	88	100	9.045 801	EUR 5,95	EUR 4,29

LLG-Glass Microfibre Filters, circles



Suitable for filtration units from DURAN. Ø 47 mm.

-15%

Pore size µm	Filtration time secs.	Weight g / m²	Thickness mm	PK	Cat. No.	Price	Now
1.60	60	52	0.26	100	9.045 861	EUR 24,00	EUR 20,40
1.20	100	52	0.26	100	6.243 711	EUR 23,00	EUR 28,05
0.70	310	75	0.45	100	7.970 106	EUR 71,80	EUR 61,03

Filtration velocity according to Herzberg

Glass Microfibre Filters



-15%

General purpose, high efficiency glass microfibre filter.

Type	Diam. mm	Pore size µm	PK	Cat. No.	Price	Now
GF/A	47	1.6	100	9.056 721	EUR 38,21	EUR 32,48
GF/A	90	1.6	100	9.056 742	EUR 69,41	EUR 59,00
GF/B	25	1.0	100	9.056 672	EUR 42,51	EUR 36,13
GF/C	25	1.2	100	9.056 673	EUR 37,62	EUR 32,02
GF/C	47	1.2	100	9.056 723	EUR 55,43	EUR 47,12
GF/C	90	1.2	100	9.056 762	EUR 104,39	EUR 88,73
GF/D	25	2.7	100	9.056 674	EUR 22,82	EUR 27,90
GF/F	25	0.7	100	9.056 676	EUR 75,87	EUR 64,49
GF/F	47	0.7	100	9.056 726	EUR 119,44	EUR 101,52
934-AH	47	1.5	100	9.056 727	EUR 58,12	EUR 49,40

LLG-Test and Centrifuge Tubes rimmed, PS or PP

- Made of ultra clear virgin polypropylene or virgin polystyrene
- Polystyrene tubes are transparent. Polypropylene tubes are opaque, break-resistant
- Tubes with cap are ethylene oxide sterilized
- With label

LLG-Dual-Position Caps for test and centrifuge tubes, PE
- For culture tubes with an O.D. of 12 mm and 17 mm

- 2 locking positions possible:
- Closed, but gas exchange is still possible for aerobic growth conditions
 - Hermetically sealed for anaerobic growth conditions, for storage or despatch of samples or for centrifugation



-15%

Description	Capacity	Diam.	Height	Material	Max.	Max. temp.	PK	Cat. No.	Price	Now
	ml	mm	mm		rcf	°C			EUR	EUR
with rim	4.0	12.0	75	PS	1400	80	500	6.265 657	21,80	18,53
with rim	4.0	12.0	75	PP	3000	120	500	6.265 658	21,80	18,53
with rim	12.0	17.0	100	PS	3000	80	250	6.265 659	22,30	18,96
with rim	12.0	17.0	100	PP	5500	120	250	6.265 660	22,30	18,87
with dual-position-cap, sterilized	4.0	12.0	75	PS	1400	80	500	6.265 661	85,40	72,59
with dual-position-cap, sterilized	4.0	12.0	75	PP	3000	120	500	6.265 662	85,40	72,59
with dual-position-cap, sterilized	12.0	17.0	100	PS	3000	80	500	6.265 663	141,20	120,02
with dual-position-cap, sterilized	12.0	17.0	100	PP	5500	120	500	6.265 664	141,20	120,02
dual-position-cap		12.0		PE	-		1000	6.265 665	27,50	23,38
dual-position-cap		17.0		PE	-		1000	6.265 666	41,90	35,62

LLG-Test Tube racks, wire/nylon



White nylon-coated wire. Opening size 18 x 18 mm
(6.286 416 = 30 x 30 mm)



-15%

Length	Width	Height	Array	PK	Cat. No.	Price	Now
mm	mm	mm				EUR	EUR
130	54	70	2 x 6	1	6.286 410	15,00	12,75
248	55	70	2 x 12	1	6.286 411	17,20	14,62
248	73	70	3 x 12	1	6.286 412	19,50	16,58
130	95	70	4 x 6	1	6.286 413	17,20	14,62
248	94	70	4 x 12	1	6.286 414	21,30	18,11
215	208	70	10 x 10	1	6.286 415	29,00	24,65
235	85	80	6 x 2	1	6.286 416	35,30	30,01

Microtube Racks, PP, 80-Well



Autoclavable. Easily load and transfer 80 tubes with 1.5 ml or 2.0 ml in a compact format (5 x 16 array). Polypropylene rack has moulded-in coordinates to aid organisation.
Dimensions (L x W x H):
225 x 67 x 28 mm.

-30%

Colour	PK	Cat. No.	Price	Now
			EUR	EUR
Blue, green, pink, yellow and orange	5	6.237 973	57,55	40,29

Microtube Racks, PP, 96-Well



Autoclavable. For 0.5 ml microcentrifuge tubes on one side and for 1.5 ml to 2.0 ml microcentrifuge tubes on the other side. Wells are arranged in standard 8 x 12 array. Handy lid snaps into place via tabs on each end of rack.
Dimensions (L x W x H):
246 x 121 x 50 mm.

-30%

Colour	PK	Cat. No.	Price	Now
			EUR	EUR
Blue, green, pink, yellow and orange	5	9.193 982	91,73	64,21

Compact Centrifuge Z 206 A



The Z 206 A accepts up to 12 x 15 ml conical and round bottom tubes. For tubes with smaller dimensions we offer several adapters.

- Microprocessor with LCD display
- Electrical lid lock
- Pre-selection of the rotor type
- Active imbalance-identification and cut off
- Manufactured according to international safety regulations, i.e. IEC 61010
- Noise level under 60 dBA at max. speed
- A large variety of rotors and accessoires
- Easy change of rotors

Please order other rotors separately.

Specifications

Max. RCF:	4427 x g
Max. speed:	6000 rpm
Max. capacity:	6 x 50 ml
Timer:	59 min 50 sec/10 sec increments 99 h 59 min/1 min increments
Power consumption:	100 W
Dimensions (W x D x H):	280 x 370 x 260 mm
Weight:	12 kg
Power supply:	230 V, 50/60 Hz



Description	PK	Cat. No.	Price	Now
			EUR	EUR
Compact centrifuge Z 206 A incl. angle rotor 12 x 15 ml	1	9.945 738	1.212,00	1.030,20
Angle rotor 12 x 15 ml	1	9.945 728	246,00	209,10
Angle rotor 6 x 50 ml	1	9.945 729	440,00	374,00
Angle rotor 18 x 1.5/2.0 ml	1	9.945 739	215,00	182,75
Swing out rotor 6 x 5 ml	1	9.945 740	291,00	247,35

Microliter Centrifuge Z 207 M



Compact Design!

Option for two different rotor types: a Fixed-angle rotor for 24 x 1.5/2.0 ml (also hermetically sealed available) and a rotor for Spin Column Kits. Distinct control panel "Touch" function for easy operation, also with gloves. Optimum air cooling of the samples even at maximum speed.

- Maintenance-free induction drive
- Rapid acceleration and deceleration
- Noise level below 60 dBA at 17.317 x g
- Microprocessor with large LCD Display
- Active imbalance-identification and cut off
- Audible signal at the end of each run
- Quick access to samples with a snap on lid
- Manufactured according to international safety regulations, i.e. IEC 61010
- Quick-key for short runs
- Storage of up to 99 runs

Without rotors. Please order separately.

Specifications

Max. RCF:	17.317 x g
Max. speed:	13.500 rpm
Max. capacity:	24 x 1.5/2.0 ml
Timer:	59 min 50 sec/10 sec increments 99 h 59 min/1 min increments
Power consumption:	170 W
Dimensions (W x D x H):	280 x 350 x 240 mm
Weight:	12.5 kg
Power supply:	100-230 V, 50/60 Hz



Description	PK	Cat. No.	Price	Now
			EUR	EUR
Microliter Centrifuge Z 207 M	1	6.290 909	1.120,00	952,00
Fixed-angle rotor 24 x 1.5/2.0 ml	1	6.290 910	180,00	153,00
Fixed-angle rotor 18 x for Spin Column Kits	1	6.290 912	210,00	178,50

Mini Centrifuges LLG-uniCFUGE 2 and LLG-uniCFUGE 2/5



Compact and reasonably priced mini centrifuge with two rotor types. Speed can be adjusted to 4000 rpm or 6000 rpm. Powerful motor for fast starting. Quick stop when the lid is opened.

LLG-uniCFUGE 2 with **Universal rotor** for 6 x 1.5/2.0 ml and 6 x 0.5 ml tubes and 2 times 8 x 0.2 ml PCR-strips.

LLG-uniCFUGE 2/5 with **rotor for 4 x 5 ml tubes**.

Specifications

Max. RCF:	1200 x g and 2000 x g
Max. speed:	4000 rpm and 6000 rpm
Max. load:	6 x 0.5/1.5/2 ml and 2 x 8-tube PCR strips (0.2 ml) // 4 x 5 ml tubes
Dimensions (diam. x H):	140 x 120 mm
Weight:	0.7 kg
Power supply:	100 - 240 V, 50/60 Hz, 1 A

-50%

Description	PK	Cat. No.	Price	Now
			EUR	EUR
LLG-uniCFUGE 2 with universal rotor with EU-plug	1	6.263 510	195,00	99,00
LLG-uniCFUGE 2/5 with rotor for 5 ml Tubes with EU-plug	1	6.263 515	195,00	99,00

LLG-Centrifuge Tubes, 5 ml, PP



6.281 113

6.281 114

6.281 115



The perfect solution for all laboratory applications requiring incubation, centrifugation and sample handling in an intermediate volume range. The LLG centrifuge tubes are available in clear, amber for use with light sensitive samples and as a color assorted pack (green, blue, yellow and red).

- Max. 25.000 x g, suitable for high speed centrifugation
- Graduations every 0.25 ml for easy volume estimation
- A flat, frosted cap and large writing pad for sample labeling and identification
- Autoclavable
- Fits all rotors and racks that hold 15 ml conical tubes, no adapters needed
- Certified free of RNase and DNase

-20%

Description	Package contents	PK	Cat. No.	Price	Now
				EUR	EUR
Clear	1 bag of 250 pieces	250	6.281 113	38,00	30,40
Colour assortment green, yellow, red, blue	4 bags of 50 pieces (1 colour per bag)	200	6.281 114	33,00	26,40
Amber	1 bag of 250 pieces	250	6.281 115	38,00	30,40

LLG-Microcentrifuge Tubes, PP



Clear, in bags. Certified free of DNase, RNase, suitable for microbiology.



Autoclavability

Temperature:	121 °C (250 °F)
Pressure:	1.05 bar or 15 psi
Time:	20 min or less

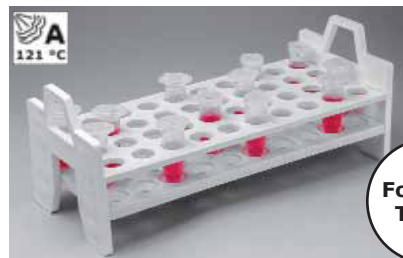
Centrifugation

Fixed angle rotor:	25000 x g
Swing out rotor:	70000 x g

-20%

Form	Volume	PK	Cat. No.	Price	Now
	ml			EUR	EUR
conical	1.5	1000	9.409 024	19,20	15,36
round	2.0	1000	9.409 025	21,50	17,20

Tube Rack, PP, 40-well



For 5 ml Tubes



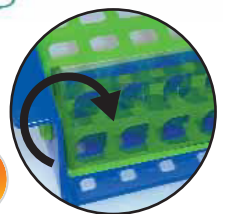
Designed specifically for 40 x 5 ml centrifuge tubes this rack will also accommodate other tubes with a diameter of 13 to 16 mm. Made of durable and corrosion resistant white polypropylene.

Dimensions (L x W x H): 260 x 113 x 105 mm

-15%

For tubes diam. mm	PK	Cat. No.	Price	Now
			EUR	EUR
13 - 16	1	9.194 026	50,84	43,19

Test Tube Rack, 40-well



Height-Adjustable

Rotate with ease to accommodate your needs. This multi-purpose rack is designed with the flexibility to hold 20 x 5 ml and 20 x 15 ml tubes or to hold 40 x 5 ml or 40 x 15 ml tubes. In addition, the rack can also hold clinical tubes of a similar diameter (16 mm) and height. Dimensions (L x W x H): 309 x 107 x 77 mm. Autoclavable.

-15%

Colour	PK	Cat. No.	Price	Now
			EUR	EUR
green/blue	1	6.281 157	33,94	28,85

Laboratory Bottles, DURAN®, with retrace code, with screw cap



With blue PP screw cap and pouring ring.

-15%

Capacity	Diam.	Height with cap	Neck thread	PK	Cat. No.	Price	Now
ml	mm	mm	GL			EUR	EUR
25*	36	74	25	1	9.072 003	6,52	5,54
50	46	91	32	1	9.072 000	6,96	5,92
100	56	105	45	1	9.072 001	5,95	5,06
150	62	105	45	1	9.071 680	6,44	5,45
250	70	143	45	1	9.072 002	6,62	5,67
500	86	181	45	1	9.072 005	8,30	7,06
750	95	203	45	1	9.071 681	10,39	8,83
1000	101	230	45	1	9.072 010	11,78	10,01
2000	136	265	45	1	9.072 007	27,62	23,48
3500	160	295	45	1	9.071 682	88,13	74,91
5000	182	335	45	1	9.072 008	120,87	102,74
10000	227	415	45	1	9.072 004	196,74	167,23
15000	268	450	45	1	7.076 312	245,66	208,81
20000	288	510	45	1	9.072 009	425,38	361,57

*With specially shaped glass edge for improved pouring out (so that an additional plastic pouring ring is not required).

LLG-Wide-Neck Jars, glass



Twist-off jar, wide-neck. Perfect for sample storage. Glass, clear. Without cap, please order cap separately.

-15%

Capacity	Ø Glass jar	Height Glass jar	PK	Cat. No.	Price	Now
ml	mm	mm			EUR	EUR
106	48	78.0	12	9.070 301	8,20	6,97
212	63	80.5	12	9.070 302	9,40	7,99
375	63	120.5	12	9.070 303	10,40	8,84
720	82	148.0	12	9.070 304	18,60	15,81
1062	82	176.0	12	9.070 305	25,70	21,85

Caps

Twist-off screw cap for LLG-Wide-Neck jars.

-15%

For	Diam.	PK	Cat. No.	Price	Now
	mm			EUR	EUR
106 ml LLG Twist-Off-jar	48	12	9.070 306	4,70	4,00
212 ml and 375 ml LLG Twist-Off-jar	63	12	9.070 307	4,80	4,08
720 ml and 1062 ml LLG Twist-Off-jar	82	12	9.070 308	7,40	6,29

LLG-Bottle Carriers, wire/nylon



For carrying laboratory bottles.

-20%

For bottles	Int. diam.	PK	Cat. No.	Price	Now
ml	mm			EUR	EUR
6 x 2000	130	1	6.286 408	72,20	57,76
6 x 1000	100	1	6.286 409	66,80	53,44

WHEATON Vials®, borosilicate glass



WHEATON Vials® feature a low profile for greater stability. With cap.



-15%

Capacity	ml
o.d. x Height	mm
Colour	
Form	
Caps	
PK	
Cat. No.	
Price	EUR
Now	EUR

4.00
15 x 48
amber
flat bottom
+
144
7.500 011
94,65
80,45

8.00
17 x 63
amber
flat bottom
+
144
7.500 022
108,35
92,10

Bottletop Dispenser LLG-uniTOPDISPENS with glass piston and clear glass cylinder



Precise and Reliable!

The LLG-uniTOPDISPENS is a **cost-efficient** bottle-top dispenser with **glass piston** available in 2 volumes: 10 ml and 50 ml. Precise, reliable and robust. The high quality of the material used and the precision of the grinding ensures the perfect seal of the complete dispensing system.

- Precise and reliable volume setting
- Visible dosing procedure
- Valve block made of PP gives optimised protection to the glass made dosing cylinder
- Precise grinding of the glass piston into the glass cylinder forms a perfect seal
- Ergonomic finger guard
- Delivered with 2 PP-adapters GL 40 and 45
- With glass piston and clear glass cylinder

-15%

Volume	Graduations	Accuracy	Precision	PK	Cat. No.	Price	Now
ml	ml	max. vol. ($\leq \pm R\%$)	max. vol. ($\leq CV\%$)			EUR	EUR
2 - 10	0.2	0.6	0.2	1	9.283 806	102,40	87,04
10 - 50	1.0	0.6	0.2	1	9.283 808	111,80	95,03

Bottletop Dispenser LLG-uniTOPDISPENS 2



- **High Chemical Resistance**
- **Adjustable Dispensing Angle**
- **Piston made of PTFE**



The combination of a springless PTFE valve and **PTFE piston** with chemically resistant ETP O-ring enables dispensing of both organic reagents as well as bases, thus, eliminating the need to buy different dispensers for different applications. Available in six volume ranges.

- Springless PTFE valve, PTFE piston with chemically resistant ETP O-ring enables **high chemical compatibility**
- Glass cylinder from borosilicate glass 3.3
- Re-circulation valve enables easy priming and bubble free dispensing
- Smooth, reproducible and effortless dispensing
- 360° rotation possible due to specially designed bottle adapter
- Flexible and adjustable delivery nozzle provides **dispensing angle flexibility** to the user
- Specially designed volume adjustment knob for quick and easy volume setting
- **The telescopic extractable intake tube can be easily adjusted to varying bottle heights**
- Five bottle adaptors included (28 mm, 32 mm, 37 mm, 40 mm and 45 mm). Standard thread: 30 mm.
- Fully autoclavable at 121 °C, 15 psi for 10 to 15 min
- Individually calibrated in accordance with ISO 8655 standards and each unit is supplied with an individual calibration certificate

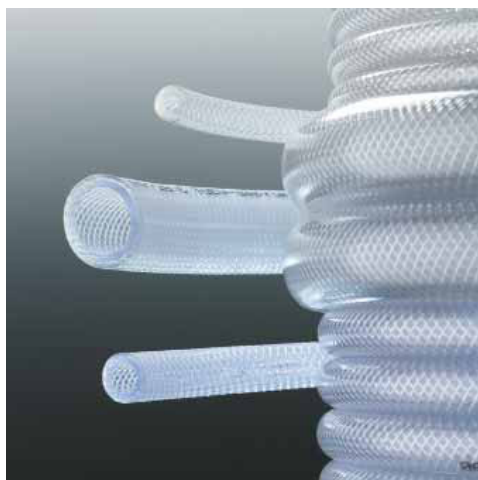
-15%

Volume	Graduations	Accuracy	Precision	PK	Cat. No.	Price	Now
ml	ml	max. vol. ($\leq \pm R\%$)	max. vol. ($\leq CV\%$)			EUR	EUR
0.25 - 2.5	0.05	0.6	0.2	1	6.282 275	222,00	188,70
0.5 - 5	0.1	0.6	0.2	1	6.282 276	222,00	188,70
1 - 10	0.2	0.6	0.2	1	6.282 277	222,00	188,70
2.5 - 30	0.5	0.6	0.2	1	6.282 278	258,00	219,30
5 - 60	1.0	0.6	0.2	1	6.282 279	258,00	219,30
10 - 100	2.0	0.6	0.2	1	6.282 280	312,00	265,20

Fabric-Reinforced Tubing, PVC



DEUTSCH & NEUMANN



Transparent. Supplied per 10 metre. PVC with terylene mesh reinforcement. Certificated by German TÜV with due regard to regulatory of DIN EN ISO 5774:2008. Proofed by BGVO directive 2002/72/EC bis 2008/39/EC for food contact. Durometer 77 Shore A.

**BIG
PACK**

-20%

Int. diam. mm	Ext. diam. mm	Wall thickness mm	PK	Cat. No.	Price EUR	Now EUR
6.00	12.0	3.00	10	6.291 358	26,60	21,28
8.00	14.0	3.00	10	6.291 359	32,40	25,92
10.00	16.0	3.00	10	6.291 360	38,30	30,64
12.50	18.5	3.00	10	6.291 361	42,70	34,16

Tubing, PTFE



Highly chemical resistant and withstands temperatures from -200 °C to +260 °C. Supplied per 10 metre.

**BIG
PACK**

-20%

Int. diam. mm	Ext. diam. mm	Wall thickness mm	PK	Cat. No.	Price EUR	Now EUR
0.50	1.0	0.25	10	6.291 372	19,40	15,52
0.50	1.6	0.55	10	6.291 373	20,00	16,00
0.80	1.6	0.40	10	6.291 374	22,10	17,68
1.00	1.6	0.40	10	6.291 375	18,60	14,88
1.00	2.0	0.50	10	6.291 376	28,60	22,88
1.60	3.2	0.80	10	6.291 377	54,30	43,44
2.00	3.0	0.50	10	6.291 378	42,10	33,68
2.00	4.0	1.00	10	6.291 379	77,10	61,68
4.00	6.0	1.00	10	6.291 380	64,00	51,20
6.00	8.0	1.00	10	6.291 381	90,50	72,40
8.00	10.0	1.00	10	6.291 382	122,60	98,08

Norprene® Tubing A 60 G



Black, Thermoplastic elastomer, Shore A 61. Temperature range -60 to +135 °C. Suitable for use as tubing for peristaltic pumps. Very high endurance. Resistant to many aggressive chemicals. Heat and ozone resistant (does not turn brittle). Fills the performance gap between single elastomers (such as EPDM, chloroprene) and expensive polymers (viton, silicone). Standard coils of 15m.

**BIG
PACK**

-20%

Int. diam. mm	Ext. diam. mm	Wall thickness mm	PK	Cat. No.	Price EUR	Now EUR
1.60	4.8	1.60	15	6.291 383	45,90	36,72
3.20	6.4	1.60	15	6.291 384	49,35	39,48
4.80	8.0	1.60	15	6.291 385	59,25	47,40
6.40	9.6	1.60	15	6.291 386	54,75	43,80
6.40	11.2	2.40	15	6.291 387	82,55	66,84
8.00	12.8	2.40	15	6.291 388	105,60	84,48
9.50	12.7	1.60	15	6.291 389	79,95	63,96

Flow Indicators LaboPlast®



Gives a visual indication of liquid or gas flow in tubing. Operates in both directions and at any angle. Can accommodate flow rates down to approx. 150 ml/min. Length incl. nozzle 88mm. For tubing from 6 mm to 11 mm diameter. Maximum pressure: 2 bar. Food Safe.

Choice of models:

- LiquiMobil made of SAN up to 30 °C working temperature
- CheMobil made of PMP up to 60 °C working temperature, autoclavable good, chemically resistance

-15%

Type	Colour	PK	Cat. No.	Price EUR	Now EUR
LiquiMobil/SAN	blue	1	9.003 910	9,65	8,20
LiquiMobil/SAN	red	1	9.003 911	9,65	8,20
LiquiMobil/SAN	black	1	9.003 912	9,65	8,20
CheMobil/PMP	blue	1	9.003 913	11,90	10,12
CheMobil/PMP	red	1	9.003 901	11,90	10,12
CheMobil/PMP	black	1	9.003 914	11,90	10,12

Microliter Pipette Tacta



Premium mechanical pipette available in volume range from 0.1 to 10 000 µl in single channel models, and from 0.5 to 300 µl in multichannel models.

- Low pipetting cycle forces reduce the risk of WRULD (Work Related Upper Limb Disorder)
- Ergonomic design for comfortable pipetting
- Optiload feature in both single and multichannel models for easy and light tip loading with perfect tip sealing
- Optijet soft tip ejection feature detaches the tip in a smooth, controlled manner
- Optilock's dual-function volume locking prevents accidental volume changes
- Easy-to-read, four-digit volume display helps to set exact volumes
- Color-coding of volumes to ease the selection of corresponding pipette tips
- Safe-Cone Filters available for models above 10 µl with convenient built-in filter ejection mechanism
- Fully autoclavable without disassembling
- Simple to clean and maintain with only three parts to disassemble
- Easy calibration adjustment with adjustment scale ensures accurate results, also in cases where factory calibration does not apply, for example when pipetting viscous liquids
- Materials have high chemical and UV-resistance to ensure a long life span for the pipette



- **Optiload Feature**
- **Optijet Soft Tip Ejection**
- **Optilock System**

Single Channel Microliter Pipette Tacta



-30%

Capacity	Increments	Accuracy max. vol. ($\leq \pm R\%$)	Precision max. vol. ($\leq CV\%$)	PK	Cat. No.	Price	Now
µl	µl					EUR	EUR
0.1-3	0.002	1.30	0.80	1	6.284 794	290,00	203,00
0,5-10	0.01	1.00	0.60	1	6.282 658	290,00	203,00
2-20	0.02	0.90	0.40	1	7.645 491	290,00	203,00
10-100	0.10	0.80	0.15	1	6.282 657	290,00	203,00
20-200	0.20	0.60	0.15	1	7.645 492	290,00	203,00
100-1000	1.00	0.70	0.20	1	6.282 656	290,00	203,00
500-5000	10.0	0.50	0.20	1	6.285 006	290,00	203,00
1000-10000	20.0	0.60	0.20	1	7.645 568	290,00	203,00

Multichannel Microliter Pipette Tacta



-30%

Channels	Capacity	Increments	Accuracy max. vol. ($\leq \pm R\%$)	Precision max. vol. ($\leq CV\%$)	PK	Cat. No.	Price	Now
	µl	µl					EUR	EUR
8	0.5-10	0.01	1.50	1.00	1	6.284 614	781,00	546,70
8	5-100	0.10	0.70	0.25	1	4.658 723	781,00	546,70
8	30-300	0.20	0.60	0.25	1	4.658 724	781,00	546,70
12	0.5-10	0.01	1.50	1.00	1	4.658 725	872,00	610,40
12	5-100	0.10	0.70	0.25	1	4.658 726	872,00	610,40
12	30-300	0.20	0.60	0.25	1	4.658 727	872,00	610,40

Pipette Filler, pipetus®

HIRSCHMANN®



Fits graduated, volumetric and Pasteur pipettes from 0.1 ml to 200 ml.

- Automatic inductive charge in the park station
- Controlled pipetting by a simple push of a button
- EX/Blow out switch for precise operating
- Speed key for 5 operating speeds
- Clear colour display with permanent display
- Optimal meniscus adjustment by sensitive valve technique
- Standard relief valve against penetration of liquid
- Ergonomic design for fatigue-free serial pipetting
- Power supply 100-240 V, with EU, UK, US plugs

Supplied with:

pipetus® complete with mains operated charging unit and inductive charging stand, color display with battery level indicator, 2 additional round PTFE filters, additional safety valve and wall mount.



- **Stepless Pumping and Suction Speed**
- **High Battery Capacity**
- **Ergonomic Operation**

-15%

Type	PK	Cat. No.	Price	Now
pipetus®	1	9.283 958	EUR 309,00	EUR 339,15

LLG-Pasteur Pipettes, PE



LLG
LABWARE

Manufactured from transparent PE. Sterile or non-sterile. Graduated.

-40%

Type	Capacity	Length	PK	Cat. No.	Price	Now
	ml	mm			EUR	EUR
non-sterile	1.0	150	500	9.401 081	22,50	13,50
non-sterile	3.0	150	500	9.401 080	22,50	13,50
sterile, single wrapped	1.0	150	1000	9.401 085	51,80	55,08
sterile, single wrapped	3.0	150	1000	9.401 084	51,80	55,08

Volumetric Pipettes, soda-lime glass, class AS, 1 mark

HIRSCHMANN®



**BIG
PACK**

EX (TD) calibrated. With dated batch identification. Declaration of conformity acc. to DIN 12600. With durable amber stain graduation, acc. to DIN EN ISO 648.

-20%

Volume	Tolerance	Overall length	PK	Cat. No.	Price	Now
ml	± ml	± 10 mm			EUR	EUR
0.5	0.005	300	12	6.291 451	57,60	46,08
1	0.008	325	12	6.291 452	57,60	46,08
1.5*	0.01	350	12	6.291 453	57,60	46,08
2	0.01	350	12	6.291 454	57,60	46,08
2.5*	0.01	350	6	6.291 455	57,60	46,08
3*	0.01	350	6	6.291 456	57,60	46,08
4*	0.015	410	6	6.291 457	57,60	46,08
5	0.015	410	6	6.291 458	57,60	46,08
6*	0.015	410	6	6.291 459	57,60	46,08
7*	0.015	410	6	6.291 460	57,60	46,08
8*	0.02	450	6	6.291 461	57,60	46,08
9*	0.02	450	6	6.291 462	57,60	46,08
10	0.02	450	6	6.291 463	57,60	46,08
15*	0.03	520	6	6.291 464	57,60	46,08
20	0.03	520	6	6.291 465	57,60	46,08
25	0.03	530	6	6.291 466	57,60	46,08
30*	0.03	530	6	6.291 467	57,60	46,08
40*	0.05	550	6	6.291 468	57,60	46,08
50	0.05	550	6	6.291 469	57,60	46,08
100	0.08	600	6	6.291 470	57,60	46,08

* Supplementary to DIN.

Pasteur Pipettes, borosilicate glass 5.1



With constriction for tight fitting of cotton wool plugs. Ø-capillary tip approx. 1.1 mm, Ø-body 6.95 mm.

- Comply with ISO 7712
- Long drawn fine tip
- Very good chemical resistance

-20%

Length	Capacity	PK	Cat. No.	Price	Now
mm	ml			EUR	EUR
150	2	1000	6.291 212	47,26	37,81
230	2	1000	6.291 213	51,51	41,21

Pipette Teats

DEUTSCH & NEUMANN® D&N



Natural rubber (NR)/Latex or Silicone (VMQ).

-20%

Capacity	Colour	Material	PK	Cat. No.	Price	Now
ml					EUR	EUR
1.8	nature	NR/Latex	100	4.661 159	not available	
2.0	red	NR/Latex	100	4.661 160	52,82	42,26
2.0	transparent/white	VMQ	10	9.072 682	24,12	19,30

Aspirator LLG-uniVACUUSYS



- Complete System
- With Integrated Vacuum Pump
- Level Control
- Automatic Vacuum Regulation

LLG-uniVACUUSYS Vacuum Aspiration System **with integrated vacuum pump and vacuum controller** is ideally suited for aspirating liquids in Life Science applications, e.g. the removal of media from cell cultures, aspiration of supernatants after centrifugation, or the removal of wash solutions from Immuno assay plates. The set vacuum is automatically re-adjusted in case of deviations.

- Integrated vacuum pump with vacuum control
- Easy to use
- Self-closing connectors for quick installation and prevention of liquid or aerosol escape
- **Liquid level sensor**, prevents liquid overflow
- Autoclavable waste collection bottle and nozzle

Scope of delivery: Vacuum Aspiration System with integrated vacuum pump, 4 liter waste collection bottle, single channel needle and 8-channel needle aspirator handle, tubing and quick-connectors

Specifications

Vacuum range:	0 to 600 mbar (adjustable)
Aspiration rate:	1 to 15 ml/s
Noise emission:	<50 dB(A)
Dimensions (W x D x H):	180 x 320 x 530 mm
Weight:	3.4 kg
Power supply:	100 - 240 V, 50/60 Hz

-30%

Type	PK	Cat. No.	Price	Now
LLG-uniVACUUSYS with EU-plug	1	6.263 585	1,160,00	812,00

LLG-Serological Pipettes type 3, PS, sterile



Ideally suited for sterile serological and cell culture applications. Easy to read graduation scales facilitate volume measurement and dosing. All LLG serological pipettes are plugged, sterile, non-pyrogenic and have an increased volume capacity through extra graduations.

- Colour coded for easy volume identification
- Single packed in easy-to-open plastic/plastic packaging

-30%

Volume	Grad.	Colour code	Negative graduations	PK	Cat. No.	Price	Now
ml	ml					EUR	EUR
1	0.01	yellow	0.3	1000	6.268 099	160,00	112,00
2	0.01	green	0.3	1000	6.268 100	160,00	112,00
5	0.1	blue	2.0	200	6.268 101	57,00	39,90
10	0.1	orange	3.0	500	6.268 102	109,00	139,30
25	0.2	red	10.0	200	6.268 103	125,00	87,50
50	0.5	purple	10.0	100	6.268 104	152,00	106,40

Square Media Bottles Typ 2019, PETG, sterile



With white HDPE screw closure. Reduced permeability to CO₂/O₂ which reduces pH-shift. Bottles and closures are radiation-sterilised and non-pyrogenic to eliminate costly washing, depyrogenation and autoclaving steps. Heatshrink band around closure and neck provides tamper-evident seal. Packed in shrink-wrapped trays. 2 l size has moulded-in handgrips and a 53-mm (53B) white closure. Bottles are sterile to 10⁻⁶ SAL, non-pyrogenic, non-cytotoxic and comply with USP Class VI guidelines. Sterile. Transparent. Leakproof. Graduated.

-15%

Capacity	Dimensions	Cover type	PK	Cat. No.	Price	Now
ml	mm				EUR	EUR
30	64 x 38 x 38	diam. 20 mm	24	9.103 121	36,50	31,03
60	82 x 41 x 41	diam. 24 mm	24	9.103 122	47,25	40,16
125	110 x 54 x 54	diam. 38 mm/design 430	24	9.103 123	76,50	65,03
250	146 x 61 x 61	diam. 38 mm/design 430	24	9.103 124	93,00	79,05
500	177 x 74 x 74	diam. 38 mm/design 430	12	9.103 125	67,50	57,38
1000	220 x 94 x 94	diam. 38 mm/design 430	12	9.103 126	91,50	77,78
2000	271 x 116 x 116	diam. 53 mm/design 53B	6	9.103 127	75,50	64,18

LLG-Inoculation Loops, sterile

NEW



Uniform surface wetting and complete transfer of the liquid. The inoculation loops are available as more rigid versions (PS) or flexible versions (HIPS). Smooth edges ensure gentle agar treatment.

- EO sterilized
- Color coded
- Hexagonal handle for easy handling
- in blister pack, 50 x 20 pcs

-40%

Capacity	Length	Material	Colour	PK	Cat. No.	Price	Now
µl	mm					EUR	EUR
1	173	PS	transparent	1000	6.290 917	48,00	28,80
10	173	PS	green	1000	6.290 918	48,00	28,80
1	173	HIPS	yellow	1000	6.290 919	48,00	28,80
10	173	HIPS	white	1000	6.290 920	48,00	28,80

LLG-Petri Dishes, Soda-lime glass

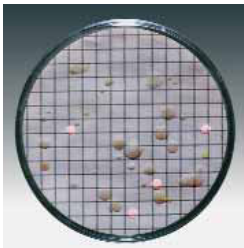


**BIG
PACK**

-15%

Ext. diam.	Height	PK	Cat. No.	Price	Now
mm	mm			EUR	EUR
40	12	10	6.291 543	9,50	8,08
60	15	10	6.291 544	9,00	7,65
80	15	10	6.291 545	9,00	7,65
90	15	10	6.291 546	11,00	9,35
100	10	10	6.291 547	11,00	9,35
100	15	10	6.291 548	11,00	9,35
100	20	10	6.291 549	11,00	9,35
120	20	10	6.291 550	20,00	17,00
150	25	10	6.291 551	29,50	25,08
180	30	10	6.291 552	68,00	57,80
200	30	10	6.291 553	79,00	67,15
200	50	10	6.291 554	77,00	65,45

Nutrient Pads



Sterile, dehydrated culture media pads in petri dishes. Once they are moistened with 3.0 ml to 3.5 ml of sterile and demineralised (or distilled) water they are ready-to-use immediately. All Nutrient Pad sets are supplied with the appropriate membrane filters, which are also individually sterile packed. Shelf life of the NPS 18 to 24 months at room temperature.



-15%

Diam.	Pore size	Type	For	Colour	PK	Cat. No.	Price	Now
mm	µm						EUR	EUR
47	0.45	R2A	Total count	green - dark green	100	6.401 084	185,00	157,25
50	0.45	Endo	E. coli + Coliforms	white / green	100	9.055 008	185,00	157,25
50	0.45	Caso	Colony count	green / green	100	9.055 017	185,00	157,25
50	0.45	Standard TTC	Colony count	green / green	100	9.055 010	185,00	157,25
50	0.45	Tomato juice	Leuconostococenos	green / green	100	9.055 026	185,00	157,25
50	0.45	Orange serum	Acid-tolerant microbes	green / green	100	9.055 035	185,00	157,25
50	0.65	Wort	Yeasts + moulds	grey / white	100	9.055 013	185,00	157,25
50	0.65	Sabouraud	Yeast + mould	grey / green	100	9.055 023	185,00	157,25

Colony Counter eCount™



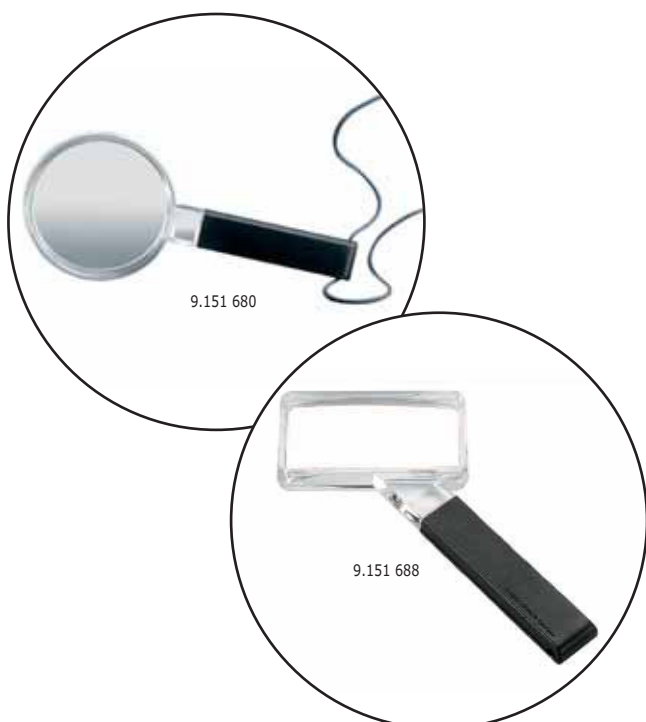
- Incl. thumb button which allows you to use the eCount as a digital tally counter
- Count up, then count down verification
- Display the total and keep up to 32 separate counts in the memory
- Disable the counter so you can write totals and notes
- Verify each count with either a bleep or LED Flash

-20%

Type	PK	Cat. No.	Price	Now
			EUR	EUR
Colony counter eCount™ incl. Sharpie® pen, black, fine-point and stand	1	9.521 783	277,00	222,32
Replacement pens Sharpie®, black fine-point	12	9.521 787	38,46	30,77

Magnifying Lens, economic

ESCHENBACH



With practical additional lens in the handle. An additional high-magnification lens enables small details to be read. Transparent plastic frame ensures easy orientation on the reading material. With eyelet in the end of the handle for round-the-neck cord which is supplied. The biconvex reading magnifiers offer a large visual field in a medium magnification range. Plano-convex additional lens with 5x magnification in handle.

-15%

Lens mm	Magnification	PK	Cat. No.	Price EUR	Now EUR
Ø 100	2.0 x 4.1 dpt	1	6.244 118	49,50	42,08
Ø 65	3.0 x 7.7 dpt	1	9.151 680	31,01	26,36
Ø 80	2.3 x 5.4 dpt	1	9.151 682	35,21	29,93
80 x 40	2.4 x 5.7 dpt	1	9.151 688	45,29	38,50

USB Handheld Microscope with integrated 2 megapixels camera, D-EL1 ecoline



Ideal for Educational Institutions

- With integrated LED illumination and Motic application software
- Sensor CMOS 1/3"
- 2 Megapixel with USB 2.0 output
- Illumination 8-LED in ring formation with 2-step brightness control
- Power direct from computer through USB2.0 connection
- Soft-grip focus wheel
- Direct capture button
- 2 Step First Magnification 10x-50x. Second magnification at 200x (depending on screen size)
- Motic EcoLine Tool application software
- Can be used on a Mac with preinstalled application Photo Booth

Calibration slide and metal stand included.

-15%

Type	PK	Cat. No.	Price EUR	Now EUR
D-EL1 ecoline	1	9.727 034	93,00	79,05

Light Boxes Slimlite Plano

Super flat light boxes, only 8 mm thin, with built-in rechargeable battery. Illumination by daylight-type LEDs (approx. 5000 Kelvin). Touch switch for ON/OFF and brightness control, cm and inch scales. Optional mains or battery operation. Lithium ion battery: 1050 mA. Mains/charging adapter included.



-10%

External dimensions (W x D x H) mm	Dimensions Illuminated area (W x D) mm	Lightning	PK	Cat. No.	Price EUR	Now EUR
290 x 200 x 8	220 x 160	23 LEDs	1	6.270 828	75,50	67,95
390 x 270 x 8	320 x 228	33 LEDs	1	6.270 829	117,00	105,30



Oxygen Meter SD 400 Oxi



NEW

Set 1

Especially High Measuring Accuracy by Luminescence Technology

Newly developed oxygen meter. High measuring accuracy and low maintenance, thanks to luminescence technology, no electrolyte solution is required. Suited for the determination of "dilution BOD".

- Short response time of the oxygen probe
- Low maintenance due to long-lasting oxygen probe and membrane head
- Inflow to the oxygen probe is not necessary, the use of stirrers or manual stirring is no longer required
- Includes software with data logger function
- Backlit LC display

Scope of delivery:

SD 400 Oxi L (Set 1): Meter with batteries, optical oxygen probe with 1.5 m cable, storage/calibration bottle, micro SD card with calibration data, software and manual (on Micro SD card), short manual and lanyard in case.

SD 400 Oxi L (Set 2): as Set 1 with 3 m cable

SD 400 Oxi L (Set 3): as Set 2 with 10 m cable

Specifications

O ₂ concentration:	0 to 50 mg/l
Resolution:	0.01 mg/l
O ₂ saturation:	0 to 500 %
Resolution:	0.1 %
O ₂ accuracy:	
0 to 200 % or 0 to 20 mg/l:	±1.0 % or ±0.1 mg/l, larger value applies
> 200 % or > 20 mg/l:	±10 %
O ₂ partial pressure:	51 to 112 kPa
Resolution:	0.1 kPa
Accuracy:	±0.2 %
Probe temperature:	-5 to 50 °C
Resolution:	0.1 °C
Accuracy:	±0.2 °C
Memory:	Micro SD card, 1 GB, saving of over 10.000 datasets
Batteries:	Micro USB or 4 x AA batteries
Dimensions (L x W x D):	162 x 98 x 54 mm
Weight:	approx. 314 g
Protection class:	IP 67

-15%

Description	PK	Cat. No.	Price	Now
			EUR	EUR
SD 400 Oxi L (Set 1)	1	6.288 678	1.098,00	933,30
SD 400 Oxi L (Set 2)	1	6.288 679	1.160,00	986,00
SD 400 Oxi L (Set 3)	1	6.288 680	1.220,00	1.037,00

Air Flow Tester

Dräger



In many fields, such as mining or industry, it is very important to detect even the smallest air flows, in order to quickly and reliably evaluate the possible diffusion of dangerous substances. With the air flow test tubes, the source, direction and speed of the air flow are visible immediately.

-15%

Type	PK	Cat. No.	Price	Now
			EUR	EUR
Air Flow Tester (Set with blower ball and 10 flow test tubes)	1	6.054 581	74,75	63,54
Flow test tubes	10	6.076 362	42,50	36,13

Digital Anemometer



For Wind Speeds Up To 11Bft (30m/s)

For the measurement of wind speed (in m/s, km/h, mph, knots, ft/min), maximum and average wind speed, indication of temperature (in °C or °F). LCD backlight display. Auto/Manual power off. Useful for the functional check of fume hoods and safety cabinets.

Wind speed range:	0 to 30 m/s
Resolution:	0.1 m/s
Accuracy:	±5 %
Temperature range:	-10 ... +45 °C (-14 ... + 113 °F)
Power supply:	3 V CR2032 (included)

-15%

Height	Width	Depth	PK	Cat. No.	Price	Now
mm	mm	mm			EUR	EUR
104	58	19	1	6.264 198	39,00	33,15

pH Combination Electrodes, gel electrolyte, SenTix®



Basic pH combination electrodes, with plastic body and gel reference system. SenTix® 20 with plug head (AS/DIN (9.040 895) or AS/BNC (9.040 897) cable combination please order separately). Sentix 21-3 and Sentix 41-3 with 3 m fixed cable.

Specifications

Temperature range:	0 to 80 °C
pH range:	0 to 14 pH
Length/diam.:	120 mm/12 mm
Electrolyte:	Gel
Diaphragm:	Fibre
Membrane shape:	Cylindrical
Membrane resistance at 25 °C:	1 GΩ

-10%

Type	Temperature sensor	Connector	Cable m	PK	Cat. No.	Price EUR	Now EUR
SenTix® 20	-	Plug-in head	-	1	9.040 851	96,00	86,40
SenTix® 21	-	DIN, waterproof	1	1	9.040 872	122,00	109,80
SenTix® 21-3	-	DIN, waterproof	3	1	9.040 873	156,00	140,40
SenTix® 22	-	BNC	1	1	9.040 840	122,00	109,80
SenTix® 41	NTC 30 kΩ	DIN, waterproof	1	1	9.040 876	193,00	173,70
SenTix® 41-3	NTC 30 kΩ	DIN, waterproof	3	1	9.040 877	227,00	204,30
SenTix® 42	NTC 30 kΩ	BNC	1	1	9.040 841	193,00	173,70

Technical Buffer Solutions



Tolerance ±0.03 pH.

-10%

Capacity ml	pH-value at 25 °C	PK	Cat. No.	Price EUR	Now EUR
1000	4.01	1	9.040 722	36,80	33,12
1000	7.00	1	9.040 723	36,80	33,12
1000	10.00	1	9.040 724	36,80	33,12
1000	10.01*	1	9.040 725	36,80	33,12
250	4.01	1	9.040 727	13,10	11,79
250	7.00	1	9.040 728	13,10	11,79
250	10.00	1	9.040 729	13,10	11,79

* For handheld meters 315i, 330i, 340i, 350i, 3110, 3210, 3310 and Inolab® versions from 2004 onwards

pH Meter pH 3110 ProfiLine



Automatic AutoRead Function for Reproducible Results

Make testing simple. Easy operation virtually eliminates errors. All function keys of the 3110 can be operated even when wearing gloves. The multifunctional display for pH, and temperature is always easy to read.

Measuring ranges

pH:	-2.0 ... +20.0 -2.00 ... +20.0 -2.000 ... +19.999
Accuracy:	±0.01 pH (±1 digit) ±0.005 from +15 °C to +35 °C
mV/Accuracy:	±1200.0/±0.3 ±2000/±1
Temperature:	-5.0 to +105.0 °C
Accuracy:	±0.1 °C

Temperature compensation: Automatic via pH electrodes with integral temperature probe, TFK 325 or Pt100

-10%

Type	Description	PK	Cat. No.	Price EUR	Now EUR
pH 3110 Set 2	case set including SenTix 41 and accessories	1	9.774 354	641,00	549,90

Temperature and Humidity Measurement

Data Logger EBI 20-T1/EBI 20-TE1



Data Logger for perfect temperature monitoring during shipping and storage.

- Waterproof
- Visual Alarm
- Max/min values on display
- Stores 40.000 readings, can be read off at any time
- Replaceable battery

Specifications

Measuring range temperature:	-30 to +70 °C
Accuracy, temperature:	±0.5 °C (-20 to +40 °C); ±0.8 °C for remaining measuring range
Resolution temperature:	0.1 °C
Memory:	40.000 samples
Sensor:	NTC
Operating temperature:	-30 to +70 °C
Storage temperature:	-40 to +70 °C
Measuring period:	1 minute to 24 hours
Measuring mode:	immediate loop measurement, measurement from starting point, start immediately until memory full, start/stop measuring, start when button pressed
Battery:	3 V lithium (CR 2450), can be replaced by user
Protection class:	IP 67
Housing:	ABS
Dimensions:	69 x 48 x 22 mm
Weight:	approx. 45 g

-10%

Type	Description	PK	Cat. No.	Price	Now
EBI 20-T1	Temperature Logger	1	9.908 069	EUR 57,00	EUR 51,30
EBI 20-TE1	Temperature Logger with external probe	1	6.228 382	EUR 108,00	EUR 97,20

Combination Infrared and Penetration Thermometer TLC 730



Handy, waterproof infrared thermometer with large measurement range for non-contact measurement of the surface temperature, and secure core temperature measurement, with the folding penetration probe. For time-saving, precise temperature measurements of incoming goods, production and storage of diverse goods and food. Conform to HACCP and DIN EN 13485. With battery and factory calibration certificate. Incl. frozen food drill.

Specifications

Measurement range:	-50 °C to +350 °C
Accuracy infrared:	±4 °C at -50°C to -30.1°C ±2.5 °C at -30 °C to -18.1°C ±1.5 °C at -18 °C to -0.1 °C ±1.0 °C at 0 °C to +65 °C ±2.0 °C or 2 % at +65 °C to +350 °C
Accuracy penetration probe:	±0.5 °C at -18 °C ... +120 °C Otherwise ±1 °C [1%], whichever is larger
Resolution:	0.1 °C
Sensor:	Type K
Operating temperature:	-25 °C to +50 °C
Dimensions (L x W x H):	48 x 24 x 172 mm (without probe)
Weight:	Approximately 140 g
Battery:	2 x 1.5 V AAA, replaceable
Deactivation:	Automatically after 15 sec., deactivatable
Protection class:	IP 55

-15%

Type	PK	Cat. No.	Price	Now
TLC 730	1	6.241 105	EUR 109,00	EUR 92,65

LLG-General Purpose Thermometers *economy*



9.237 012



9.237 016

Solid stem, with loop, capillary yellow enameled, graduation resistant against acids and alkalis. Red filling or environmentally friendly blue filling. diam. 6 mm, length: 300 mm.



-15%

Charge	Immersion depth	Measuring range °C	Graduations °C	PK	Cat. No.	Price	Now
colour						EUR	EUR
red	total	-10 ... +50	1	1	9.237 010	7,70	6,55
red	total	-10 ... +100	1	1	9.237 011	8,40	7,14
red	total	-10 ... +150	1	1	9.237 012	9,20	7,82
red	total	-10 ... +200	1	1	9.237 013	9,20	7,82
red	total	-10 ... +250	1	1	9.237 014	14,70	12,50
blue	76 mm	-10 ... +110	1	1	9.237 015	8,90	7,57
blue	76 mm	-10 ... +110	0,5	1	9.237 016	9,70	8,25
blue	76 mm	-10 ... +150	1	1	9.237 017	9,70	8,25
blue	76 mm	-10 ... +250	1	1	9.237 018	13,60	11,56
blue	76 mm	-10 ... +360	2	1	9.237 019	14,90	12,67

Vacuum Measuring Instrument VACUU-VIEW®



- Compact Design
- Integrated Sensors
- Coarse + Fine Vacuum

The rough vacuum gauge **VACUU-VIEW®** covers the measuring range from atmospheric pressure down to 0.1 mbar, very precisely. The combined rough and fine vacuum gauge **VACUU-VIEW® extended** works in the enhanced range from atmosphere down to 10^{-3} mbar. The illuminated displays of both vacuum gauges enable comfortable reading.

- Chemically resistant, heavy duty vacuum sensors highly reliable at harsh laboratory conditions even in case of very aggressive chemicals
- High repeatability and long-term accuracy under all typical conditions reliable and repeatable results
- Illuminated display, easy to read
- Display with menu driven handling, easy to use e.g. for unit settings
- Compatible to gauge DCP 3000 and controller CVC 3000
- The product is delivered ready for use

VACUU-VIEW®

Chemically resistant ceramic diaphragm sensor for measurement in the rough vacuum range. VACUU-VIEW provides gas-independent pressure indication with precise capacitive readout. Highest precision and chemical resistance in the range from atmosphere down to 0.1 mbar, a perfect gauge for all rough vacuum applications.

VACUU-VIEW® extended

The heavy duty combination of ceramic diaphragm sensor and ceramic jacketed Pirani sensor ensures reliable readings in the wide range from atmosphere down to 10^{-3} mbar. Precision and chemical resistance in an exceptionally wide range, one gauge covers all applications in the fine and rough vacuum range

Specifications

Measuring range VACUU-VIEW®:	1100 to 0.1 mbar(hPa)/825 to 0.075 torr
Measuring range VACUU-VIEW® extended:	1100 to 0.001 mbar(hPa)/825 to 0.001 torr
Accuracy VACUU-VIEW®:	±1 mbar(hPa)
Accuracy VACUU-VIEW® extended:	±15 % of indicated value in the range from 0.01 ⁻⁵ mbar(hPa) ±3 mbar for > 5 mbar(hPa)
Vacuum connection:	KF DN 16/hose nozzle DN 6/10 mm
Dimensions (L x W x H):	103 x 62 x 50 mm
Weight:	190 g
Power supply:	100-230 V, 50/60 Hz (CEE/CH/UK/AUS/CN)

-15%

Type	PK	Cat. No.	Price	Now
VACUU-VIEW	1	6.268 865	715,00	607,75
VACUU-VIEW extended	1	6.268 864	815,00	692,75

Speed Vacuum Systems SC 920 G



- Application: Vacuum oven
- Flow rate up to 2.04 m³/h/Ultimate vacuum 10 mbar abs.
- Integrated KNF self-drying system ensures that condensate is quickly removed from the pump heads without the vacuum being altered. This significantly reduces process time and preserves the pump heads.
- Chemically resistant and thus ideal for use with extremely aggressive/corrosive gases and vapors
- With overload protection and mains fuse
- Vacuum system for one rotary evaporator (order separately)

Specifications

Connectors for tube:	pneumatic ID10 mm, coolants ID8 mm
Permissible media and ambient temperature:	5 to 40 °C
Pump head:	PPS
Diaphragm:	PTFE-coated
Valves:	FFPM
Dimensions (L x W x H):	294 x 366 x 423 mm

-10%

Type	Flow rate L / min.	Ultimate vacuum mbar (abs).	PK	Cat. No.	Price	Now
SC 920 G	20	2	1	4.658 071	4.167,00	3.750,30

LABORTOPS

Thermo Shaker LLG-uniTHERMIX 1 and 2

The LLG-uniTHERMIX is ideal for shaking and temperature control of a variety of tubes or plates (depending on the block used). With its high temperature uniformity, fast heating rate and excellent mixing results the LLG-uniTHERMIX is perfect for the incubation of samples of any kind, in particular for Life Science applications, e.g. Enzyme reactions, transformations, and denaturation of DNA and RNA.

- Precise temperature control system
- Temperatures up to 100 °C
- Temperature accuracy of ± 0.5 °C (20 to 45 °C)
- Efficient mixing up to 1500 rpm (depending on the heating block)
- Up to 9 storable programs
- Many block options available (see below)
- Automatic block recognition

LLG-uniTHERMIX 1: with shaking and heating function,
Temperature range: RT +5 °C to approx. +100 °C

LLG-uniTHERMIX 2: with shaking, cooling and heating function,
Temperature range: 15 °C below RT to approx. +100 °C

Heating blocks must be ordered separately.



- **Wide Range of Blocks Available**
- **Easy to change**
- **With or Without Cooling Function**
- **Cost-Efficient**

Specifications

Temperature range	RT +5 °C to approx. +100 °C
LLG-uniTHERMIX 1:	15 °C below RT to approx. +100 °C
LLG-uniTHERMIX 2:	
Temperature control:	± 0.5 °C (at 20 to 45 °C)
Uniformity:	± 0.5 °C (at 20 to 45 °C)
Max. heating rate:	5.5 °C/min
Max. cooling rate	5 °C/min (100 °C to RT)
(LLG-uniTHERMIX 2 only):	0.5 °C/min (below RT)
Speed range:	300 to 1500 rpm
Orbit:	3 mm
Display:	LCD
Programs:	6 stages, 9 programs
Timer:	1 to 99 min or continuous
Capacity:	1 heating block
Dimensions (W x D x H):	200 x 235 x 120 mm
Weight:	7.3 kg
Electrical heating/cooling power:	200 W
Power supply:	220 - 240 V, 50/60 Hz

-40%

Type	PK	Cat. No.	Price	Now
			EUR	EUR
LLG-uniTHERMIX 1 with EU-plug	1	6.263 470	1.385,00	831,00
LLG-uniTHERMIX 2 with EU-plug	1	6.263 472	2.020,00	1.218,00



LLG-uniTHERMIX 2
with shaking, cooling
and heating function

LLG-uniTHERMIX 1
with shaking and
heating function

Heating Blocks



-40%

For	PK	Cat. No.	Price	Now
			EUR	EUR
96 well PCR plates non-skirted, 0.2 ml tubes*	1	6.263 474	295,00	177,00
96/384 micro plate*	1	6.263 480	295,00	177,00
24 tubes, 0.5 ml*	1	6.263 475	295,00	177,00
24 tubes, 1.5 ml*	1	6.263 476	295,00	177,00
24 tubes, 2.0 ml*	1	6.263 477	295,00	177,00
8 tubes, 5 ml	1	6.263 481	295,00	177,00
8 tubes, 15 ml, max. 800 rpm	1	6.263 478	295,00	177,00
4 tubes, 50 ml, max. 600 rpm	1	6.263 479	295,00	177,00

*with lid